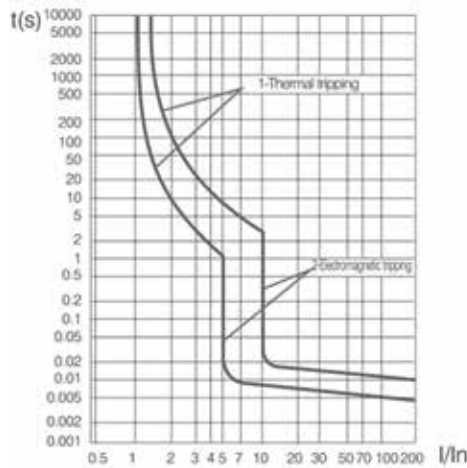


**SPECIFICATION SHEET - TRIPPING CURVES**

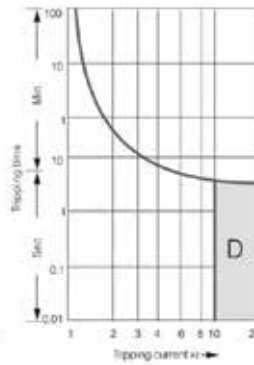
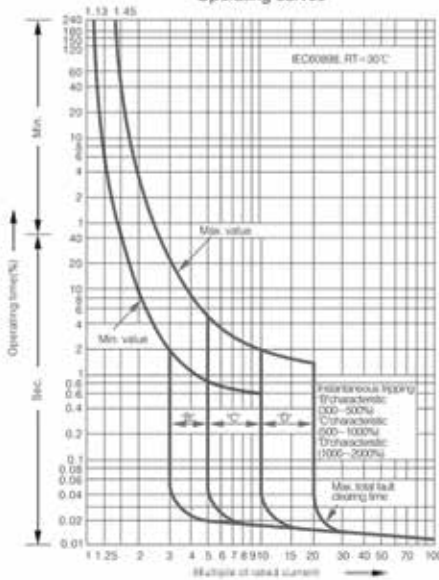
C type



**KC3 temperature compensation correction**

In A	Temperature compensation coefficient under various operational temperature								
	-10°C	0°C	10°C	20°C	30°C	40°C	50°C	55°C	60°C
1-6	1.20	1.14	1.09	1.05	1.00	0.96	0.80	0.75	0.70
10-32	1.18	1.12	1.08	1.04	1.00	0.96	0.92	0.88	0.84
40-60	1.16	1.12	1.08	1.03	1.00	0.9	0.87	0.83	0.80

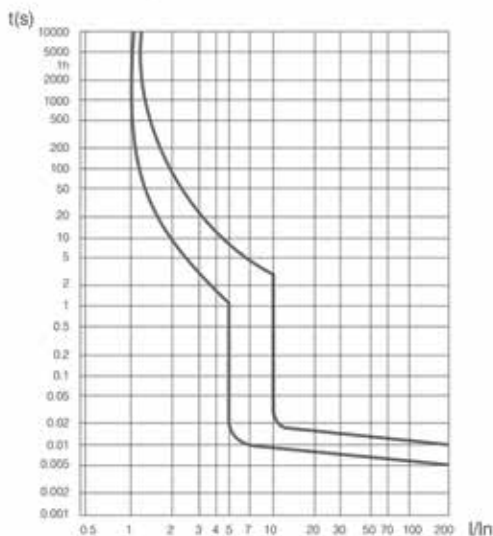
**KC6-T, KC10-T tripping curves**  
Operating curves



**KC6-T, KC10-T series including 6KA, 10KA MCBS**

Nominal current of MCB(A)	Internal resistance (mohm)	Power loss (W)	Max impedance of impedance loop(Ohm)			Thermal correction of nominal currents				
			Character			Ambient temperature				
			B	C	D	20°C	30°C	40°C	50°C	60°C
1	1215.69	1.24	46.20	25.70	14.40	1.05	1	0.95	0.90	0.85
2	343.28	1.38	21.60	12.02	6.73	2.08	2	1.92	1.84	1.74
3	128.09	1.15	16.90	9.40	5.26	3.18	3	2.82	2.61	2.37
4	105.53	1.68	10.68	5.94	3.33	4.24	4	3.76	3.52	3.24
6	29.22	1.08	7.14	3.97	2.22	6.24	6	5.76	5.52	5.30
10	14.49	1.55	3.87	2.15	1.21	10.60	10	9.30	8.60	7.80
16	10.00	2.56	2.24	1.25	0.70	16.80	16	15.20	14.20	13.30
20	8.02	3.32	1.55	0.86	0.48	21.00	20	19.00	17.80	16.80
25	3.11	2.00	2.43	1.35	0.76	26.20	25	23.70	22.20	20.70
32	3.05	3.17	1.27	0.71	0.40	33.50	32	30.40	28.40	27.50
40	2.16	3.40	0.60	0.33	0.19	42.00	40	38.00	35.60	33.20
50	1.65	4.20	0.71	0.39	0.22	52.50	50	47.40	44.00	40.50
63	1.68	6.30	0.47	0.32	0.15	66.20	63	58.00	54.20	49.20

**KCN tripping curves**



**KCN temperature compensation correction**

In A	Temperature compensation coefficient under various operational temperature				
	20°C	30°C	40°C	50°C	60°C
6	6.4	6	5.6	5.1	4.6
10	10.5	10	9.4	8.8	8.1
16	17.5	16	14.4	14	13.3
20	21	20	18.8	17.6	16.2
25	26	25	23.4	21.9	19.9
32	34	32	29.9	27.4	24.8

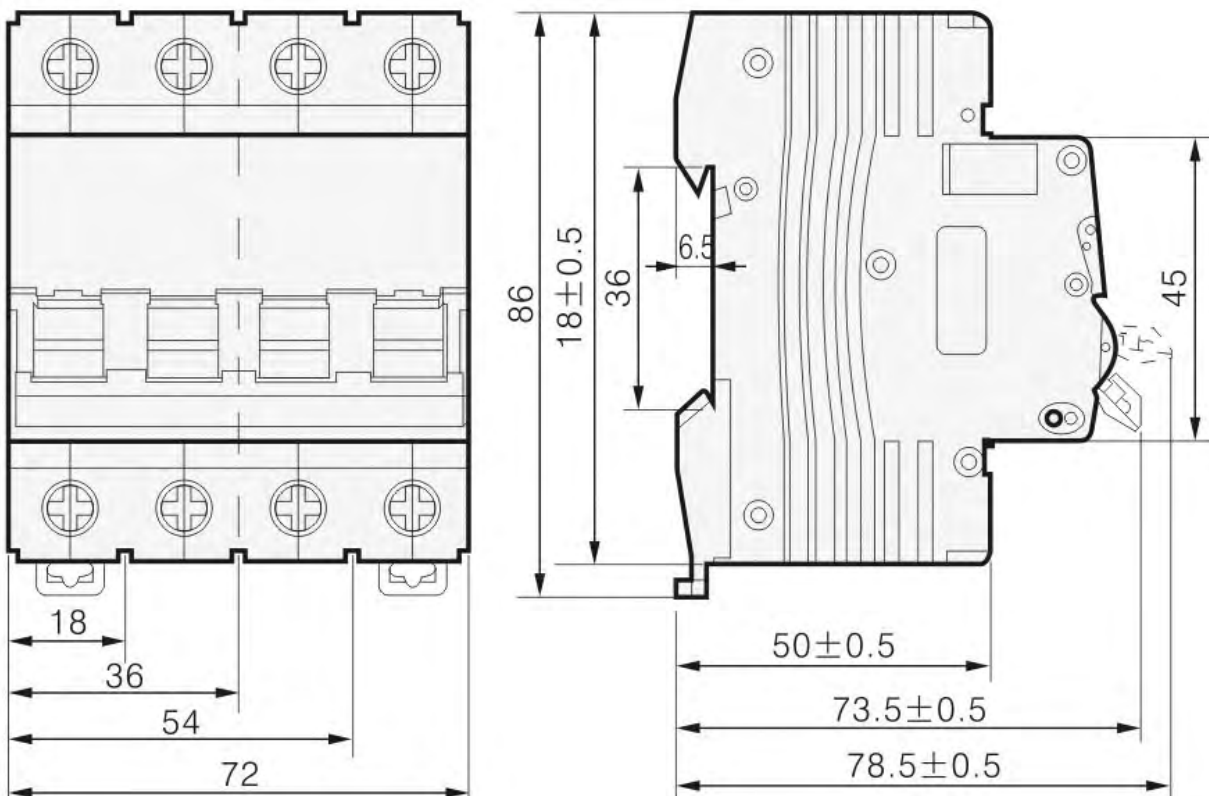
**SPECIFICATION SHEET - SWITCH DISCONNECTORS**

## KCM switch disconnectors

### Electrical characteristics

Thermal rating(Hh)	16-32A	40-63A	100-125A
Connection	flexible	1.5 to 25mm <sup>2</sup>	6 to 35mm <sup>2</sup>
	rigid	1.5 to 16mm <sup>2</sup>	4 to 50mm <sup>2</sup>
Isolating voltage(Hi)	250-400V~	250-400V~	250-400V~
Impulse withstand voltage(vimp)	4kV	4kV	4kV
Operating category	AC 22A <sup>III</sup>	AC 22A <sup>III</sup>	AC 22A <sup>III</sup>
Permissible nominal current(Icw)	750A	1700A	2500A
Breaking capacity in short-circuit(Icw)	1500A	3000A	3700A
No. of electrical operations	>30 000	>30 000	>30 000
Protection index	IP 2x wired	IP 2x wired	IP 2x (>25mm)

### KCM-T



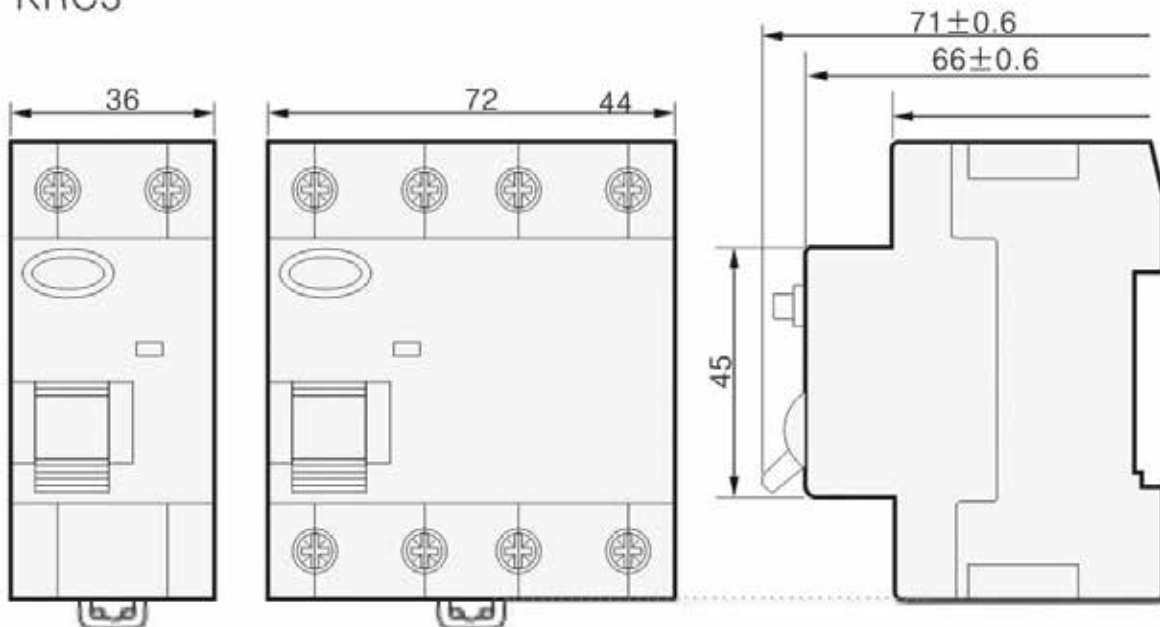
**SPECIFICATION SHEET - EARTH LEAKAGE UNITS**

**KRC3**

Standard	Conforming to IEC 61008-1, VC8035	
Protection	Ground Fault only	
Rated Current - In	25, 40, 63 and 80	
Number of poles	2 ( 1P + N), 4 (3P + N) pole	
Rated sensitivity current - IΔn	30mA	
Rated residual	0.5 x IΔn	
Rated voltages	2pole	240VAC
	4 pole	240/415VAC
Residual current-off time at IΔn	≤ 0.1s	
Residual conditional short circuit current (Icw)	3kA	
Type of terminal	Box Terminal	
Terminal Capacity	Cables up to 35mm <sup>2</sup>	
Installation	35mm DIN rail	
Slot size	45mm	
No overload protection	To be protected by MCB	

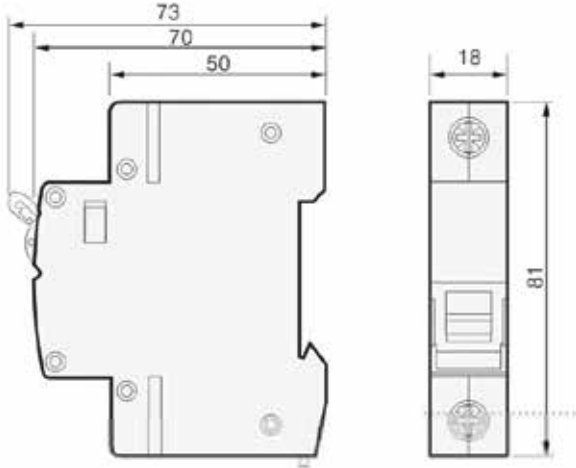
**Dimensions**

**KRC3**

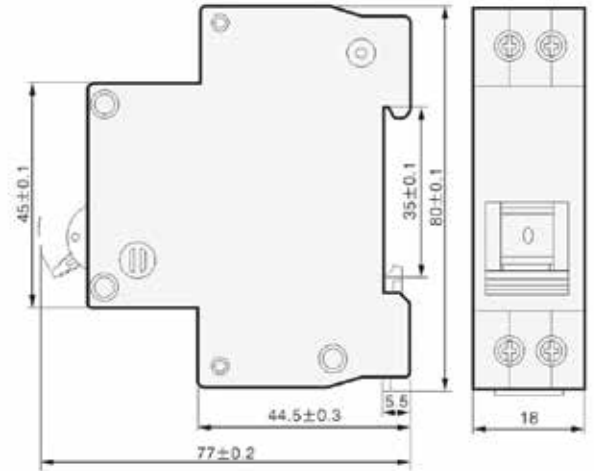


**SPECIFICATION SHEET - DIMENSIONS**

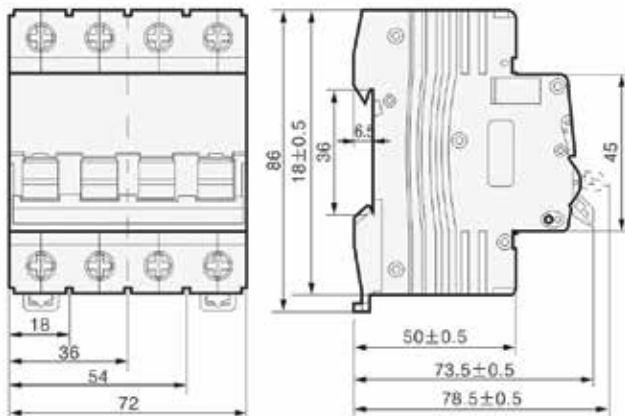
KC3



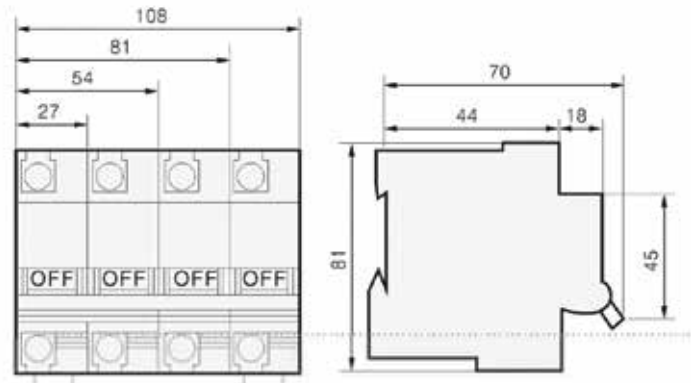
KCN



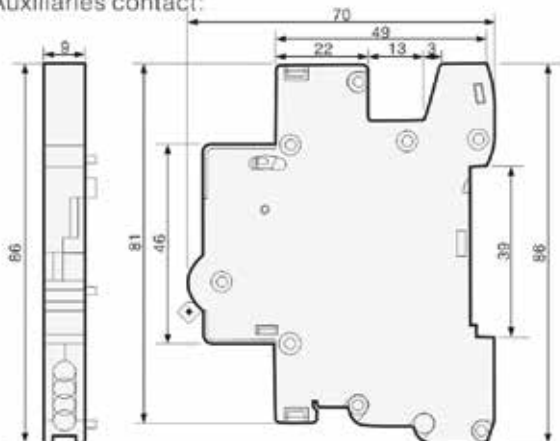
KC6-T, KC10-T



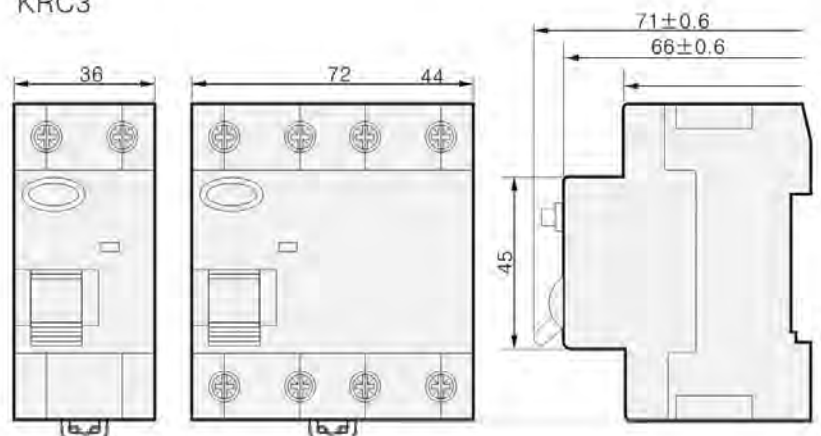
KC10-T-125



Auxiliaries contact:



KRC3



### TS18 & TS18A TIME OPERATING INSTRUCTIONS

#### PRECAUTIONS FOR SAFETY

##### CAUTION

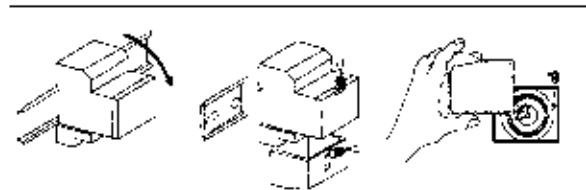
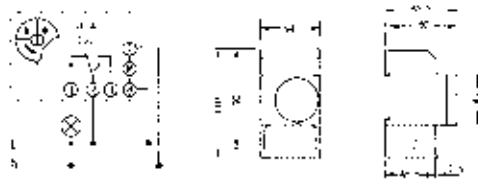
- > Do not open time switch.
- > This may lead to Electrical Shock.
- > Only qualified persons may open the time switch.
- > Warranty will be null and void if seal is broken.

#### TECHNICAL CHARACTERISTICS

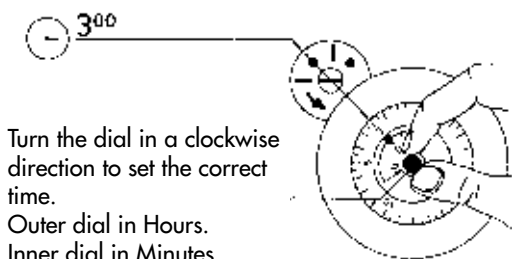
- > Quartz Movement.
- > TS18: 200hr power reserve after being connected to the main supply for 120 hours, starts automatically a few minutes after mains connection.
- > TS18A: No power reserve - starts immediately after being connected to the mains supply.
- > Operating Temperature range: - 10°C to +50°C
- > Frequency: 50/60Hz
- > Power Consumption: Approx. 0.5VA
- > Contact Rating:
  - Resistive Load 16A 230VAC
  - Inductive Load (cos = 0.6) 4A 230VAC

#### INSTALLATION

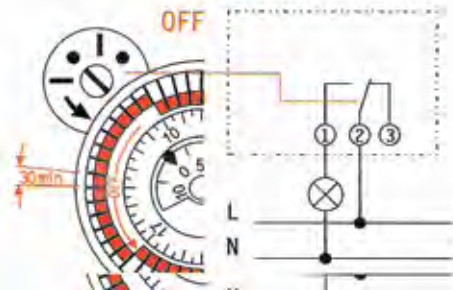
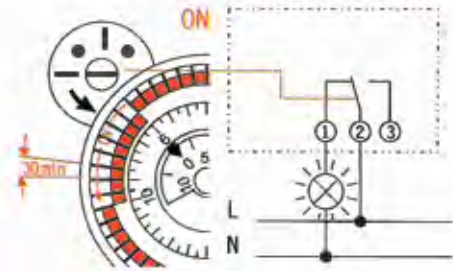
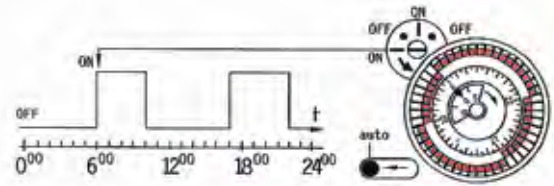
Electrical equipment should only be installed and connected by qualified electricians.



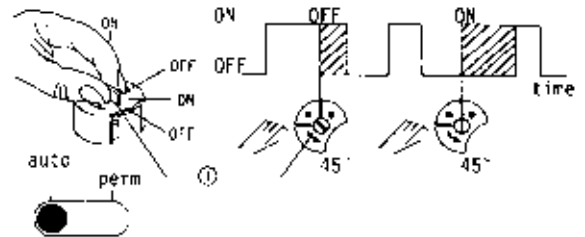
#### SETTING THE TIME



#### 24 h PROGRAMMING



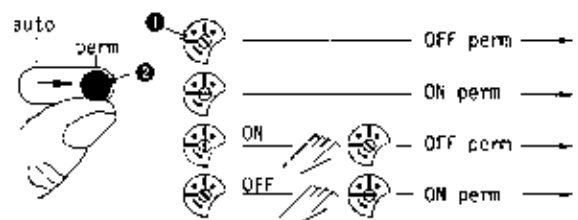
#### MANUAL SETTING



#### MANUAL CONTROL ON/OFF (Over-ride Control)

Turn the control axis (1) in direction of arrow by one notch. The manual control is automatically cancelled by the following counter-acting command of the program sequence.

#### PERMANENT ON/OFF



#### PERMANENT ON/OFF

Set the hand lever (2) to "PERM" = permanent control; and turning the control axis (1) in the direction of the arrow; the required permanent control ON or OFF can now be adjusted. Turning the hand lever to "Auto" = automatic control, the permanent control is cancelled. The actual switch position is maintained until the next counter-acting command of the automatic program sequence is triggered. An immediate correction can be carried out by means of the manual control (Over-ride control).