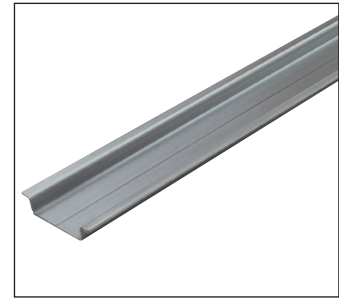
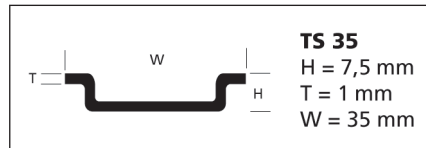
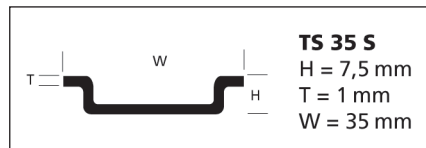


Din Rail**TS 35**

Carrier rail 35 x 7.5 mm
 0.039 in (1 mm) thick
 acc. to EN 50 022
 Steel, zinc-plated and yellow chromated 1N 82 A
 (length of 2 m)

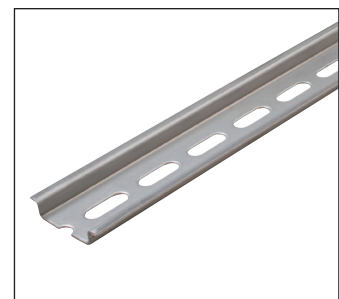
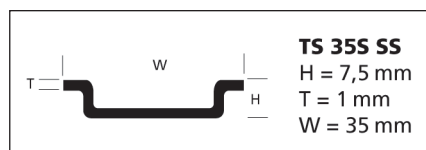
**TS 35S (slotted)**

Carrier rail 35 x 7.5 mm
 perforated length
 (length of 2 m)

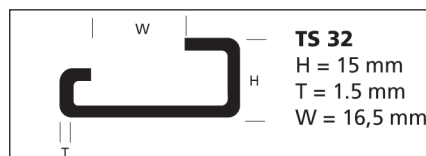
**TS 35S SS (slotted) - Stainless Steel**

Carrier rail 35 x 7.5 mm
 perforated length
 (length of 2 m)

Material - Stainless Steel Type 316

**TS 32**

Carrier rail 32 mm
 0.059 in (1,5 mm) thick
 acc to DIN 46 277, sheet 1
 Steel, zinc-plated and yellow chromated 1N 135 A
 (length of 2 m)

**TS 35 AL**

Aluminium carrier rail 35 x 8.0 mm
 1.5mm thick
 (length of 2 m)

