

Accessories



Flexiform Edge Protection Grommet Strip	4/1
PVC Beading Edge Protection Strip	4/2
Edge Protection Grommets	4/2
Push-on Caps and Elbow Grommets	4/4
DinRail	4/5
Connector Strips	4/6
Fospro	4/6
HelaCon Plus	4/7
Line Taps	4/9
Wall Boxes	4/10

Page



The restriction of the use of certain hazardous substances in electrical and electronic equipment



Halogen Free



Limited Fire Hazard

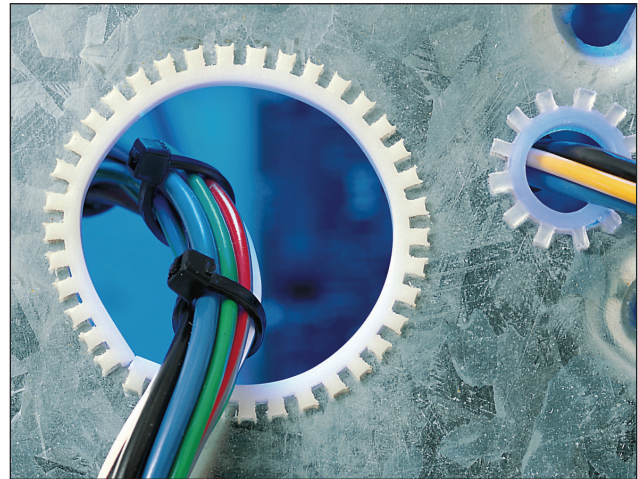
Flexiform Edge Protection Grommet Strip

Features and Benefits

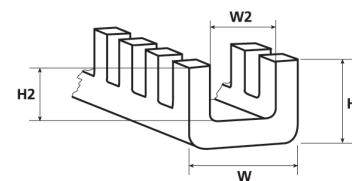
Flexiform grommet strip is applied to the panel edge and is easily installed without the need for adhesives. The close-fitting profile provides effective protection for cables by preventing any chafing.

Application

Flexiform grommet strip is used to protect cables routed through sharp-edged cut-out sections.



Optimal protection of cables and wires at panel edges.



Flexiform grommet strip

Material Data

RoHS	Material	Polyamide 6 (PA6)	HF (halogenfree)
	Operating Temperature	-60°C to +95°C Continuous, (+130°C for 200 h)	
	Flammability	Halogen free	

Material Data

RoHS	Material	Polyethylene (PE)	HF (halogenfree)
	Operating Temperature	-30°C to +80°C Continuous, (+120°C for 200 h)	
	Flammability	Halogen free	

Material Data

RoHS	Material	Polytetrafluoroethylene (PTFE)
	Operating Temperature	-60°C to +260°C Continuous, (+350°C for 200 h)
	Flammability	Non burning
	Certification	PAN 6480-A

Technical Table

Code	Panel Thickness Min. mm	Panel Thickness Max. mm	Width (W)	Width (W2)	Height (H)	Height (H2)	Reel Length	Material	Colour
G51PA	0.4	1.5	3.9	1.5	4.3	2.7	25 m	PE	Natural (NT)
G51PB	1.3	2.4	4.6	2.4	4.3	2.7	25 m	PE	Natural (NT)
G51PC	2.2	3.4	5.7	3.5	4.3	2.7	25 m	PE	Natural (NT)
G51PD	3.3	5.0	8.4	5.1	6.2	4.3	25 m	PE	Natural (NT)
G51PE	4.9	6.7	9.9	6.7	6.4	4.5	25 m	PE	Natural (NT)
G51PF	6.5	8.2	11.4	8.3	6.8	4.8	25 m	PE	Natural (NT)
G51PG	8.0	10.0	13.2	10.1	6.8	4.8	25 m	PE	Natural (NT)
G51PH	9.7	13.2	16.4	13.2	6.8	4.8	25 m	PE	Natural (NT)
G51NA	0.4	1.5	3.9	1.5	4.3	2.7	25 m	PA6	Natural (NT)
G51NB	1.3	2.4	4.6	2.4	4.3	2.7	25 m	PA6	Natural (NT)
G51NC	2.2	3.4	5.7	3.5	4.3	2.7	25 m	PA6	Natural (NT)
G51ND	3.3	5.0	8.4	5.1	6.2	4.3	25 m	PA6	Natural (NT)
G51NE	4.9	6.7	9.9	6.7	6.4	4.5	25 m	PA6	Natural (NT)
G51NF	6.5	8.2	11.4	8.3	6.8	4.8	25 m	PA6	Natural (NT)
G51NH	9.7	13.2	16.4	13.2	6.8	4.8	25 m	PA6	Natural (NT)
G51TA	0.4	1.5	3.9	1.5	4.3	2.7	3 m	PTFE	Natural (NT)
G51TB	1.3	2.4	4.6	2.4	4.3	2.7	3 m	PTFE	Natural (NT)
G51TC	2.2	3.4	5.7	3.5	4.3	2.7	3 m	PTFE	Natural (NT)
G51TD	3.3	5.0	8.4	5.1	6.2	4.3	3 m	PTFE	Natural (NT)
G51TE	4.9	6.7	9.9	6.7	6.4	4.5	3 m	PTFE	Natural (NT)
G51TG	8.0	10.0	13.2	10.1	6.8	4.8	3 m	PTFE	Natural (NT)
G51TH	9.7	13.2	16.4	13.2	6.8	4.8	3 m	PTFE	Natural (NT)

All dimensions in mm. Subject to technical changes.

Flexiform grommet strips are not self-adhesive and therefore not suitable for outer edges.

Minimum order quantities on certain sizes.

PVC Beading Edge Protection Strip

Features and Benefits

Manufactured from a flexible PVC compound which ensures ease of use. Can be used to protect cables from chafing on bulkheads.

Application

PVC Beading strip is used to protect cables routed through sharp-edged cutout sections. It can also be used to provide an attractive finish to panel edges.

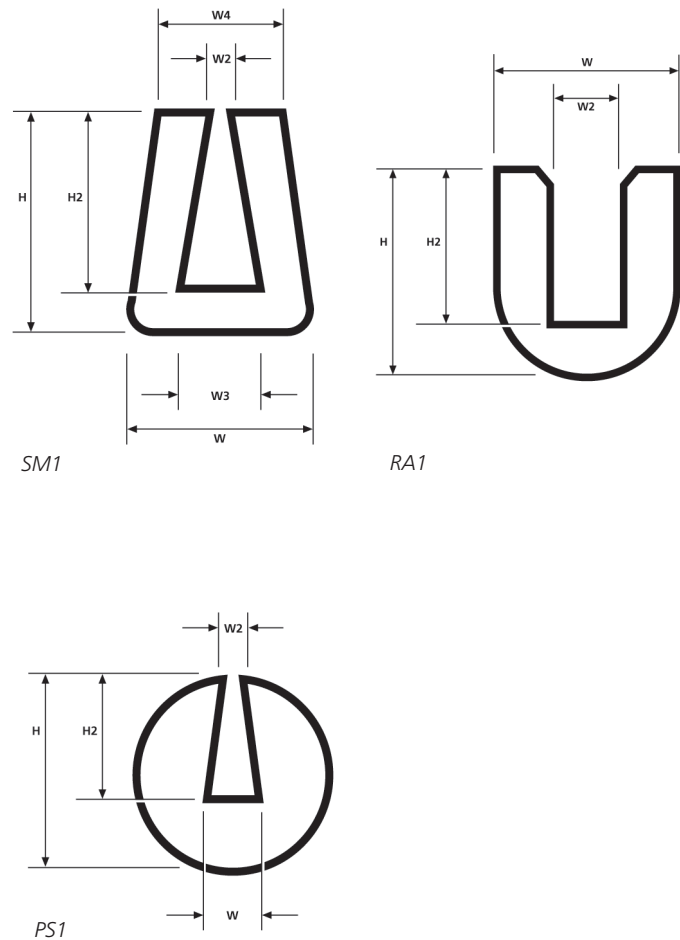
Material Data

RoHS	Material	Flexible Polyvinyl Chloride, cadmium free (PVC)
	Colour	Black (BK)
	Operating Temperature	-65°C to +105°C
	Flammability	Self extinguishing

Technical Table

Code	Width (W)	Width (W2)	Width (W3)	Width (W4)	Height (H)	Height (H2)
SM1	5.0	1.0	1.8	4.2	6.3	4.9
RA1	6.4	2.4	-	-	7.1	5.6
PS1	1.2	0.6	-	-	5.0	3.15

All dimensions in mm. Subject to technical changes.



Edge Protection Grommets

Features and Benefits

HellermannTyton edge protection grommets, made of cadmium-free, flexible PVC or Polyethylene, come in a wide range of shapes and sizes. They are resistant to various minerals and environmental effects.

Application

Edge protection grommets are used wherever cable and wires are routed through outlets and apertures. HellermannTyton grommets offer excellent mechanical protection.

Material Data

RoHS	Material	Polyethylene (PE), Cadmium free
	Flammability	UL94 HB
	Operating Temperature	-10°C to +70°C
	Shore Hardness A	Nom. 45



Material Data

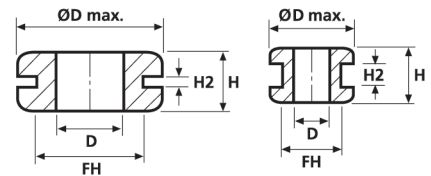
RoHS	Material	Flexible Polyvinyl Chloride, cadmium free (PVC)
	Flammability	UL94 V2
	Operating Temperature	-30°C to +60°C
	Shore Hardness A	56±5



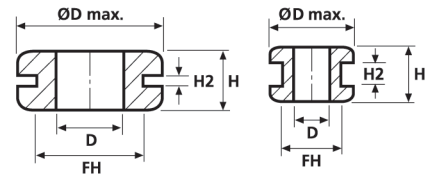
Edge protection grommets.

Technical Table

Code	Ø D max.	Fixing Hole Ø (FH)	D	Height (H)	Height (H2)	Material	Colour
*HV3459	9.2	4.8	3.2	5.6	0.8	PVC	Black (BK)
*HV2214F	9.6	6.4	4.8	6.4	0.8	PVC	Black (BK)
*HV2214AF	9.6	6.4	4.8	6.4	3.2	PVC	Black (BK)
*HV3098F	9.6	6.4	4.0	5.6	0.8	PVC	Black (BK)
*HV3195F	9.6	6.4	4.0	6.4	1.6	PVC	Black (BK)
*HV3108F	11.1	8.0	5.6	6.4	1.6	PVC	Black (BK)
*HV2156F	14.3	9.5	7.9	7.9	1.6	PVC	Black (BK)
*HV3109A	14.3	9.5	6.4	7.1	1.6	PVC	Black (BK)
*HV3109BF	14.3	9.5	6.4	7.1	2.4	PVC	Black (BK)
*HV3111F	12.7	9.5	4.8	7.1	1.2	PVC	Black (BK)
*HV3543F	15.9	9.5	4.0	6.4	3.2	PVC	Black (BK)
*HV3109	14.3	11.1	6.4	7.1	1.6	PVC	Black (BK)
*HV2215F	19.0	12.7	7.9	8.8	1.6	PVC	Black (BK)
*HV2215AF	19.0	12.7	7.9	9.5	3.2	PVC	Black (BK)
*HV3110	17.5	12.7	9.6	7.9	1.6	PVC	Black (BK)
*HV3110AF	17.5	12.7	9.6	6.7	1.2	PVC	Black (BK)
*HV3556F	19.0	14.3	11.1	6.4	1.6	PVC	Black (BK)
*HV3556AF	19.0	14.3	11.1	9.5	3.2	PVC	Black (BK)
*HV3592	20.6	15.9	12.7	9.5	6.8	PVC	Black (BK)
*HV4165F	20.6	15.9	12.7	6.0	1.2	PVC	Black (BK)
*HV2412	25.4	19.0	12.0	7.9	1.6	PVC	Black (BK)
*HV3222F	28.6	22.2	15.9	7.5	1.2	PVC	Black (BK)
*HV2166C	38.0	25.4	22.0	11.1	3.2	PVC	Black (BK)
*HV2165	46.1	34.9	30.0	8.7	0.8	PVC	Black (BK)
*HV2512	46.1	32.5	18.3	8.7	0.8	PVC	Black (BK)
*HV4243F	24.4	19.0	Blank	7.9	2.0	PVC	Black (BK)
*HV244F	36.5	25.4	Blank	9.5	2.4	PVC	Black (BK)
HV1101	25.5	19.0	12.0	10.0	1.6	PVC	Black (BK)
HV1201	9.5	6.4	4.0	5.6	1.6	PVC	Black (BK)
HV1201B	9.5	6.4	4.0	6.5	2.5	PVC	Black (BK)
HV1203	17.5	12.0	10.0	6.8	2.0	PVC	Black (BK)
HV1204	17.5	12.0	10.0	8.8	4.0	PVC	Black (BK)
HV1205	17.5	13.5	10.0	8.7	4.0	PVC	Black (BK)
HV1206	17.5	12.0	10.0	10.8	6.0	PVC	Black (BK)
HV1207	14.0	10.0	6.0	6.4	1.5	PVC	Black (BK)
HV1208	14.0	9.5	8.0	8.0	1.5	PVC	Black (BK)
HV1208	14.0	9.5	8.0	8.0	1.5	PVC	White (WH)
HV1209	11.0	9.0	4.0	5.5	1.5	PVC	Black (BK)
HV1210	15.0	9.0	6.0	10.5	2.0	PVC	Black (BK)
HV1212	9.0	6.0	4.0	7.0	1.0	PVC	Black (BK)
HV1215	10.0	8.0	6.0	5.0	1.0	PVC	Black (BK)
HV1216	14.5	8.0	5.0	6.5	1.5	PVC	Black (BK)
HV1218	14.0	10.0	6.0	9.0	4.0	PVC	Black (BK)
HV1301	15.9	11.0	8.0	7.0	1.0	PVC	Black (BK)
HV1301	15.9	11.0	8.0	7.0	1.0	PVC	White (WH)
HV1302	15.9	11.0	8.0	9.0	3.0	PVC	Black (BK)
HV1303	15.9	11.0	8.0	6.4	1.6	PVC	Black (BK)
HV1304	15.9	11.0	8.0	10.8	6.0	PVC	Black (BK)
HV1305	24.0	18.0	14.0	7.0	3.0	PVC	Black (BK)
HV1305	24.0	18.0	14.0	7.0	3.0	PVC	White (WH)
HV1401	15.9	9.5	5.0	4.8	0.8	PVC	Black (BK)
HV1402	23.0	18.5	6.0	7.0	2.0	PVC	Black (BK)
HV1606	31.0	25.0	17.0	11.0	3.0	PVC	Grey (GY)
HV1607	43.0	37.0	29.0	11.0	3.0	PVC	Grey (GY)
HV1608	58.0	52.0	44.0	11.0	3.0	PVC	Grey (GY)
HV1502	11.5	8.0	6.5	8.0	1.5	PVC	Black (BK)
OP1503	9.6	6.7	5.4	5.0	1.0	PE	Natural (NT)

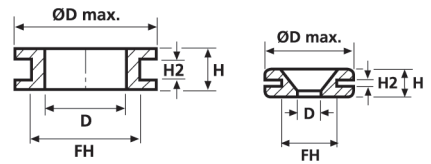


HV2214F to HV3459



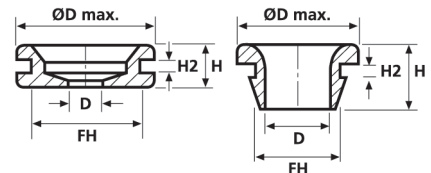
HV1101

HV1201 to HV1218



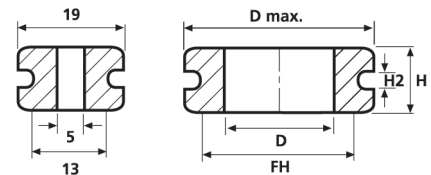
HV1301 to HV1305

HV1401

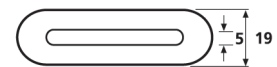


HV1402

HV1502 and OP1503



HV1606 to HV1608



All Dimensions in mm. Subject to technical changes.

* Available in South Africa

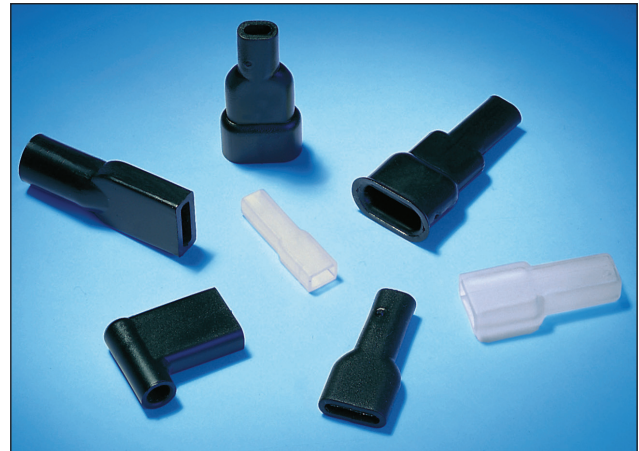
Push-on Caps and Elbow Grommets

Features and Benefits

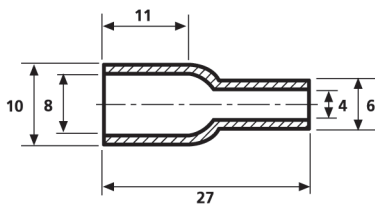
The push-on caps and elbow grommets are flexible and easy to apply. They offer highly effective protection against spraying water.

Application

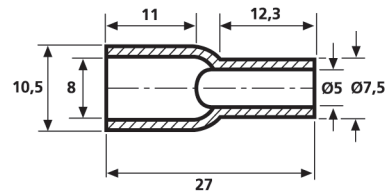
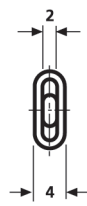
The protective push-on caps and elbow grommets are specially constructed to insulate and protect flat pin bushings. The caps and grommets are used in all areas of automotive electronics and in electrical connection systems.



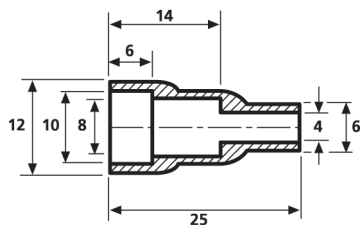
Push-on caps and elbow grommets in various dimensions.



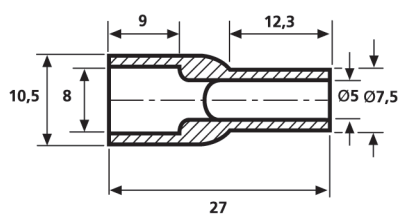
HV4819



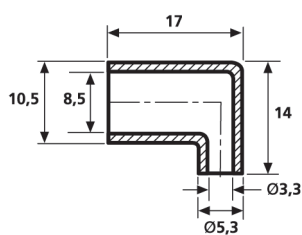
HV4822



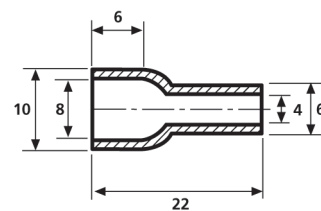
HV4820



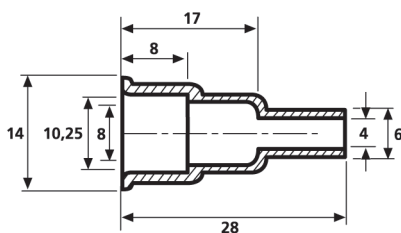
HV4823



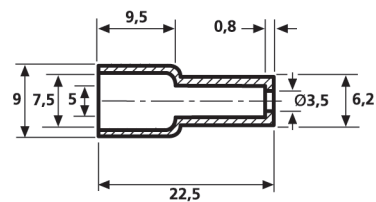
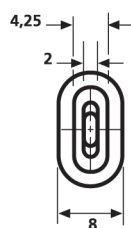
HV4821



HV4824



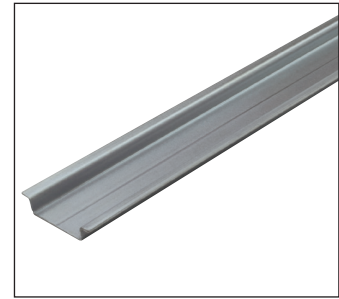
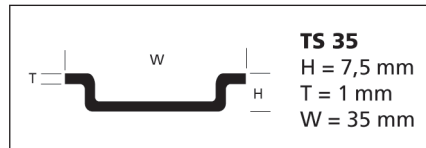
HV4825



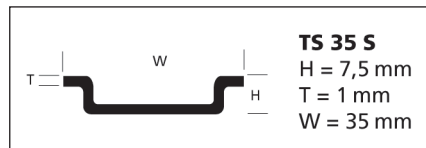
OP4827

Din Rail**TS 35**

Carrier rail 35 x 7.5 mm
 0.039 in (1 mm) thick
 acc. to EN 50 022
 Steel, zinc-plated and yellow chromated 1N 82 A
 (length of 2 m)

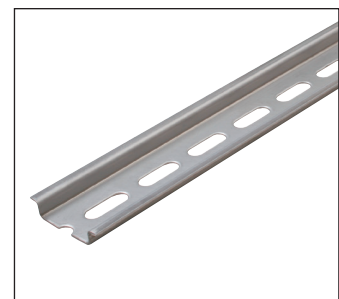
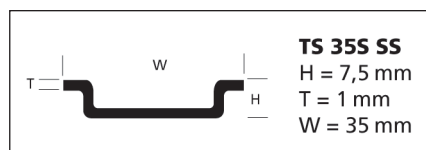
**TS 35S (slotted)**

Carrier rail 35 x 7.5 mm
 perforated length
 (length of 2 m)

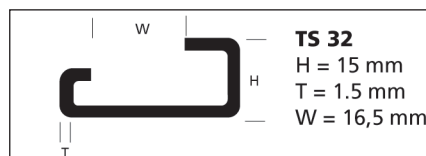
**TS 35S SS (slotted) - Stainless Steel**

Carrier rail 35 x 7.5 mm
 perforated length
 (length of 2 m)

Material - Stainless Steel Type 316

**TS 32**

Carrier rail 32 mm
 0.059 in (1,5 mm) thick
 acc to DIN 46 277, sheet 1
 Steel, zinc-plated and yellow chromated 1N 135 A
 (length of 2 m)

**TS 35 AL**

Aluminium carrier rail 35 x 8.0 mm
 1.5mm thick
 (length of 2 m)



Connector Strips

Rated Voltage: 380 VAC

Material: PE

Temperature: 85°C

Technical Table

Code	Rated Current (A)	Wire Size (mm)
CS3MBK	3	4
CS5BK	5	6
CS15BK	15	12
CS30BK	30	16
CS60BK	60	25

All dimensions in mm. Subject to technical changes.



Fospro

Fospro, the 'Professionals' choice of de-watering fluid, is now available to you. Fospro is used by the Ministry of Defence and Multinational Companies where performance counts.

If your car will not start due to our damp climate then FOSPRO will 'lift' the water away, allowing your electrics to perform. It is a penetrating fluid useful for dismantling rusted nuts and bolts. Ideal for lubricating door hinges, key locks or household items including lawnmowers, bicycles and skateboards etc. It restores electrical conductivity. Ideal for all types of terminals on the car, washing machines, or other electrical appliances.

The aerosol can is also equipped with an extension tube to allow access to those difficult round the corner areas and of course the propellant is a friendly CO₂ type. This not only makes it safer but also means that the can is filled with a greater proportion of effective concentrate, unlike most Propane/Butane propellant alternatives.



Fospro

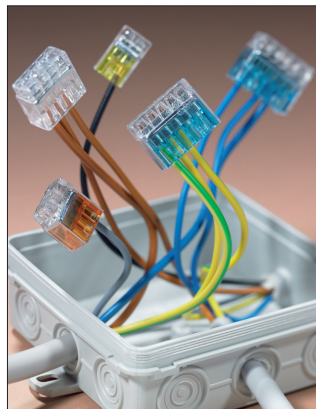
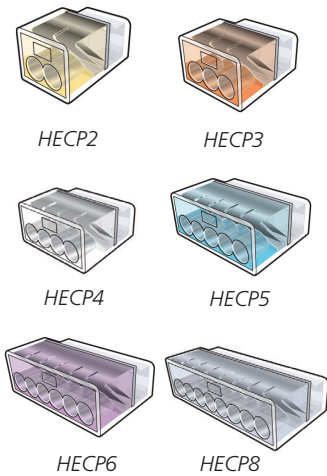
HelaCon Plus

Transparent Wire Connectors

With HelaCon Plus Transparent Wire Connectors, cable can be connected quickly, safely and without screws. The 100% transparent casing guarantees that all connections can be checked quickly at any time. Six different sizes also mean that an optimal wire connector is available to meet every challenge.

HelaCon Plus combines lots of advantages:

- Saves you time, saves you money, just strip and push
- Conductor sizes 1.5 mm² to 2.5 mm²
- For stranded, rigid single and multi-core conductors
- Unique double-feeder system for easy installation and secure connection
- Low insertion force for fast & easy connection
- 100% transparent casing for visual inspection
- Flame-retardant thermoplastic housing
- Colour coded for easy identification
- SABS authorised, RCC No. 0611110
- Rating - 450V, T110, 24A
- 2, 3, 4, 5, 6 & 8 entry
- Separate test entry



HelaCon Plus used in an on-wall mounted junction box.

Material Data

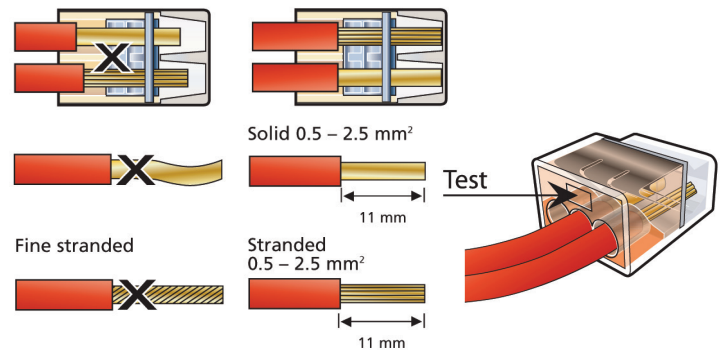
Material Housing	Polycarbonate (PC)
Material Plated Brass	Brass Tinned
Material Spring Plate	Stainless Steel
Max Current	24A
Max Voltage	450V (VDE), 600V (cULus)
Wire Range (cULus)	AWG 12 to 22 solid/stranded
Wire Range (VDE)	0.5 to 2.5mm ² solid/stranded (max 7 cores)
Stripping Length	11mm
Flammability	UL94 V0
Operating Temperature	-30°C to +110°C (VDE), -30°C to +105°C (cULus)
Specification	VDE, NEMCO, SEMCO, FIMCO, DEMCO, KEMA-KEUR, cULus



HelaCon Plus connectors.



Easy push-in, safe fitting and optical check due to newly developed double spring.



Technical Table

Code	Colour	Number of Conductors	Width (W)	Height (H)	Depth (D)	Pack Cont.
HECP-2	Transparent (CL), Yellow (YL)	2	11.75	10.45	19	100
HECP-3	Transparent (CL), Orange (OG)	3	15.90	10.45	19	100
HECP-4	Transparent (CL)	4	20.05	10.45	19	75
HECP-5	Transparent (CL), Blue (BL)	5	24.20	10.45	19	50
HECP-6	Transparent (CL), Violet (VT)	6	28.35	10.45	19	50
HECP-8	Transparent (CL), Grey (GY)	8	36.65	10.45	19	50

All dimensions in mm. Subject to technical changes.

HelaCon Lux

Features and Benefits

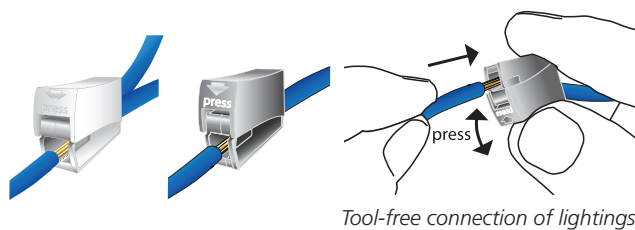
HelaCon Lux is best suitable to connect solid and flexible wire. It combines the push-in connector technology that is well known from HelaCon Easy with a lock/unlock spring mechanism to connect fine-stranded conductors. They may be used within a typical housing range of 450 V / 24 A. The two available variants showing either one or two inputs for solid conductor on the installation side offer high flexibility in application. Instead of using screwed terminal blocks the tool-free application of the lighting connectors results in an easy, time-saving and safe connection of conductors. The user benefits from this especially in overhead work and when wires are difficult to access

Application

A typical application is lighting installation, where the solid conductor from concealed cabling has to be connected to a flexible conductor for lightings. The 2/1 variant allows the looping through of the supply lines for additional devices. The conductor on the output/lighting side can easily be inserted by pressing the locking mechanism and can be released in the same way at any time. The lighting side can carry any kind of conductor and makes HelaCon Lux connectors also useful to connect devices that carry flexible connecting cables like control devices e.g. for blinds, fans and other drives.

Application Method

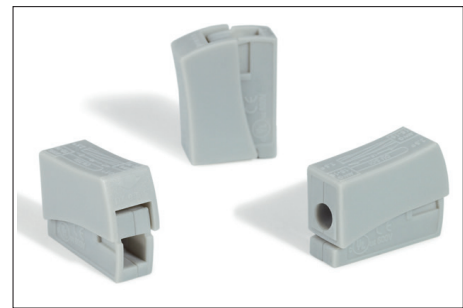
- Do not work under load
- Strip off the conductors 9 - 11 mm
- Push in the solid conductor into the round input on the installation side
- Unlock the lighting side by pressing the connector's rectangular input
- Insert the lighting conductor and release the connector
- To remove, simply press the connector again and withdraw the conductor
- The installation side can easily be removed by twisting and pulling the conductor
- The test entry can be used to check the voltage with a meter



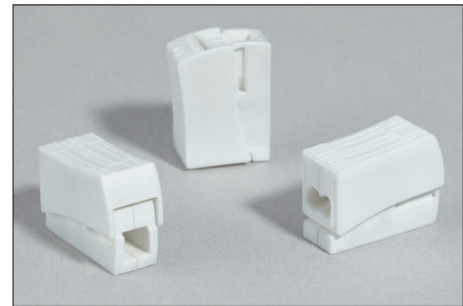
Tool-free connection of lightings.

Material Data

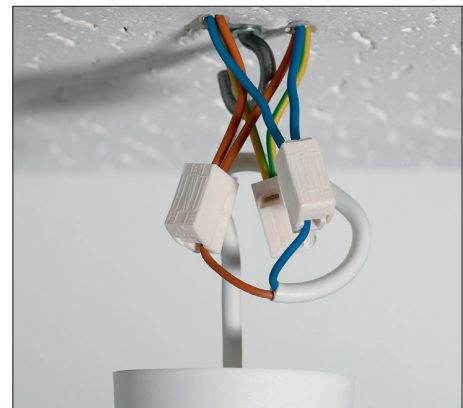
Material Housing	Polycarbonate 6.6 (PA66)
Max Current	24A
Max Voltage	450V
Wire Range (VDE)	0.5 (0.75) to 2.5mm ²
Stripping Length	11mm
Flammability	UL94 V2
Operating Temperature	-5°C to +100°C
Specification	VDE, FIMCO, ENEC, KEMA-KEUR, CEBEC, cULus



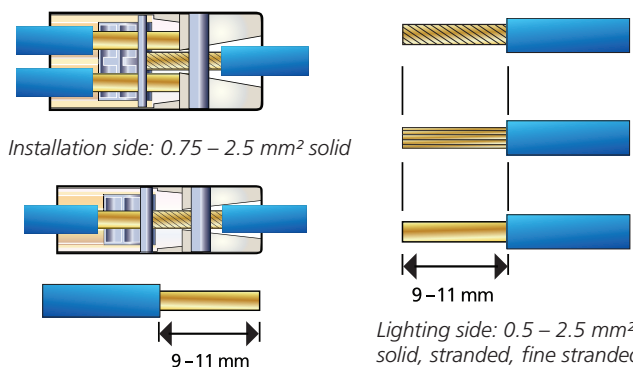
HelaCon Lux 1/1.



HelaCon Lux 2/1.



Quick installation and release of lighting devices with HelaCon Lux.



Technical Table

Code	Colour	Number of Conductors	Width (W)	Height (H)	Depth (D)	Pack Cont.
HECQ1GY	Grey (GY)	1	8.10	15.80	20.80	100
HECQ2WT	White (WH)	2	9.50	15.80	20.80	100

All dimensions in mm. Subject to technical changes.

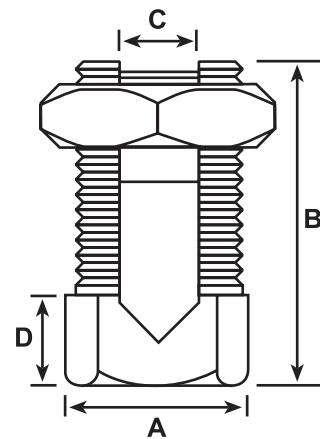
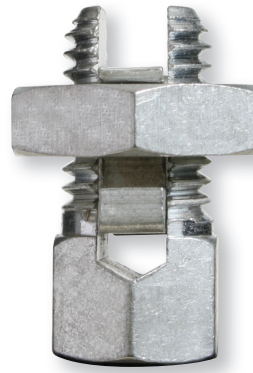
Line Taps

- Made with high tensile brass and electro tinned
- Threads are formed by a rolling process – giving the nut extra clamping force.
- Pressure pads are from extruded bar.

Technical Table

Code	Conductor mm ²	Number of Conductors			
		A	B	C	D
HTLT10	10	12.6	27.4	5.0	9.5
HTLT16	16	14.5	27.4	5.5	10.0
HTLT25	25	14.5	29.0	7.0	10.0
HTLT35	35	20.5	35.0	8.0	13.0
HTLT50	50	22.0	42.5	9.3	17.0
HTLT70	70	26.5	47.3	11.0	17.0
HTLT95	95	29.0	53.0	14.0	17.5
HTLT120	120	34.2	59.2	16.2	18.0
HTLT150	150	34.2	59.2	16.0	17.5
HTLT185	185	32.0	59.2	17.8	17.5

All dimensions in mm. Subject to technical changes.



Wall Boxes

HT4X2WB

- Cold dipped galvanised wall box with 20 mm gland entry
- 4 mm machine screw thread
- Standard carton x 100



HT4X2WB

HT4X4WB

- Cold dipped galvanised wall box with 20 mm gland entry
- 4 mm machine screw thread
- Standard carton x 100



HT4X4WB

HT4X2EBM

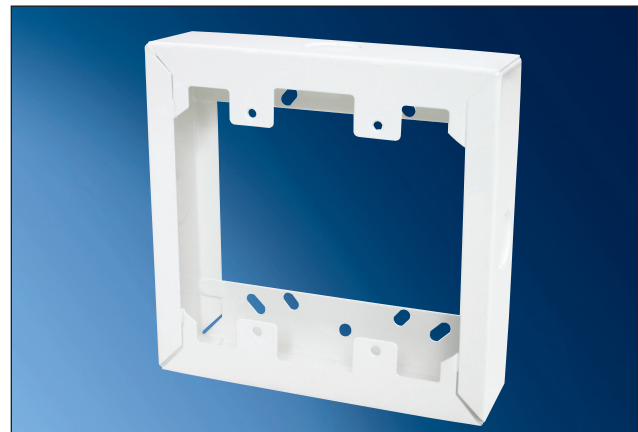
- White powder coated extension wall box with 20 mm gland entry
- 4 mm machine screw thread
- Standard carton x 100



HT4X2EBM

HT4X4EBM

- White powder coated extension wall box with 20 mm gland entry
- 4 mm machine screw thread
- Standard carton x 100



HT4X4EBM

Wall Boxes

HT3X3WB

- Cold dipped galvanised wall box with 20 mm and 25 mm gland entry
- Earth stud
- Heavy duty
- Standard carton x 100



HT3X3WB

HT3X6WB

- Cold dipped galvanised wall box with 20 mm and 25 mm gland entry
- Earth stud
- Heavy duty
- Standard carton x 100



HT3X6WB

HT3X3WBE

- Cold dipped galvanised wall box with 20 mm and 25 mm gland entry
- Earth stud
- Standard
- Standard carton x 100



HT3X3WBE

HT3X6WBE

- Cold dipped galvanised wall box with 20 mm and 25 mm gland entry
- Earth stud
- Standard
- Standard carton x 100



HT3X6WBE

Notes

